

FOB

# CWMC

Cerubo World Marketing Collection

Furniture that  
Enriches your  
Way of Living





# MIMI & ECO

Cerubo World Marketing Collection

# Dining Table, T:40mm

## MIMI series



Tree Trunk Edge

### 2509, Walnut MIMI Table Top

SIZE	PRICE	M3/PCS
WWT-2509-MI-2200X950-1000 T.TOP ONLY	\$783.10	0.178
WWT-2509-MI-2000X950-1000 T.TOP ONLY	\$711.60	0.162
WWT-2509-MI-1800X850-900 T.TOP ONLY	\$594.80	0.140
WWT-2509-MI-1600X850-900 T.TOP ONLY	\$531.00	0.125



Tree Trunk Edge

### 2466, Cherry MIMI Table Top

SIZE	PRICE	M3/PCS
CCT-2466-MI-2200X950-1000 T.TOP ONLY	\$442.40	0.178
CCT-2466-MI-2000X950-1000 T.TOP ONLY	\$401.00	0.162
CCT-2466-MI-1800X850-900 T.TOP ONLY	\$333.50	0.140
CCT-2466-MI-1600X850-900 T.TOP ONLY	\$298.00	0.125



Artificial Edge

### 2471, Beech MIMI Table Top

SIZE	PRICE	M3/PCS
BBT-2471-2200X950-1000 T.TOP ONLY	\$411.10	0.178
BBT-2471-2000X950-1000 T.TOP ONLY	\$372.20	0.162
BBT-2471-1800X850-900 T.TOP ONLY	\$310.80	0.140
BBT-2471-1600X850-900 T.TOP ONLY	\$277.70	0.125

## ECO-TOP series



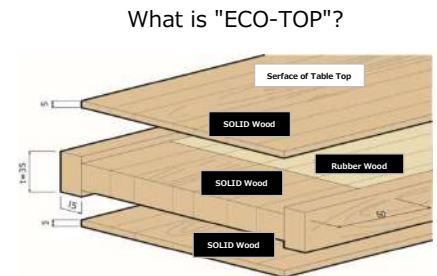
### 2474, Walnut ECO Table Top

SIZE	PRICE	M3/PCS
WWT-2474-SL-2200X1000 T.TOP ONLY	\$480.60	0.184
WWT-2474-SL-2000X900 T.TOP ONLY	\$385.30	0.152
WWT-2474-SL-1800X900 T.TOP ONLY	\$355.20	0.138
WWT-2474-SL-1650X850 T.TOP ONLY	\$330.90	0.120
WWT-2474-SL-1500X850 T.TOP ONLY	\$287.90	0.110



### 2474, Red Oak ECO Table Top

SIZE	PRICE	M3/PCS
ZZT-2474-SL-2200X1000 T.TOP ONLY	\$352.80	0.184
ZZT-2474-SL-2000X900 T.TOP ONLY	\$288.30	0.152
ZZT-2474-SL-1800X900 T.TOP ONLY	\$265.30	0.138
ZZT-2474-SL-1650X850 T.TOP ONLY	\$247.50	0.120
ZZT-2474-SL-1500X850 T.TOP ONLY	\$215.60	0.110



What is "ECO-TOP"?

The top surface "looks like solid wood" it means it gives the impression of being made from a single solid material shown in the image above. But it's constructed using layers of laminate material to save cost. The texture remains solid, minimizing precious of natural resources. It is an ideal structure with little deviation, which is also a characteristic of innocence.

## Select Legs



### 2476, 4-LEG

M3/SET	PRICE
0.034	\$96.90
	\$155.80
	\$96.90
	\$89.90
	\$53.10

### 2477, 4-LEG

M3/SET	PRICE
0.038	\$91.20
	\$144.10
	\$91.20
	\$85.30
	\$66.20

### 2475, 2-LEG

M3/SET	PRICE
0.075	\$119.20
	\$153.00

### 2469, 2-LEG

M3/SET	PRICE
0.086	\$58.10

### 2470, 2-LEG

M3/SET	PRICE
0.087	\$59.50

### 2262, 2-LEG

M3/SET	PRICE
0.089	\$91.40
	\$12.30

### WOOD Selection



\* Table High = 750 (mm)

# TWS

Cerubo World Marketing Collection



# Dining Table, T:27mm

## TWS series



2448, Walnut Table Top

SIZE	PRICE	M3/PCS
WWT-2448-2000X900 T.TOP ONLY	\$400.10	0.120
WWT-2448-1800X900 T.TOP ONLY	\$362.60	0.109
WWT-2448-1650X850 T.TOP ONLY	\$332.70	0.095
WWT-2448-1500X850 T.TOP ONLY	\$286.20	0.087



2448, Red Oak Table Top

SIZE	PRICE	M3/PCS
ZZT-2448-2000X900 T.TOP ONLY	\$255.90	0.120
ZZT-2448-1800X900 T.TOP ONLY	\$232.90	0.109
ZZT-2448-1650X850 T.TOP ONLY	\$213.30	0.095
ZZT-2448-1500X850 T.TOP ONLY	\$183.30	0.087

## Select Legs



2480, 4-LEG

M3/SET	0.015
OAK	PRICE \$76.80
WALNUT	PRICE \$112.50

2479, 2-LEG

M3/SET	0.083
OAK	PRICE \$129.80
WALNUT	PRICE \$182.50

## About Natural Wood

Natural wood has its own personality and has different looks, colors, textures and environmental conditions where it grew.

### OAK



Shades of wood color



Knots in grain



Black streak



Silver grain



Pin hole knots

### WALNUT



Shades of wood color



Knots from branches



Curls in grain

\* Table High = 750 (mm)

## Kind of Wood/Finishing color



Oak



Black Walnut



Black Cherry



European Beech

\* for Table Leg ONLY



European Beech

\* Black coating Finish



Rubber wood-BLACK

\* for Table Leg ONLY



IRON

\* for 2262, 2-LEG ONLY



Oak-LOMZ

\* for Gallia ONLY

Type of wood and fully direct imported.

Kind	Country of origin
Oak	China, North America
Black Walnut	Eastern North America, Canada
European Beech	Parts of Europe (France &c.)
Rubber wood	Southeast Asia (Vietnam)
Black Cherry	Northeastern United States



# Chair

Cerubo World Marketing Collection



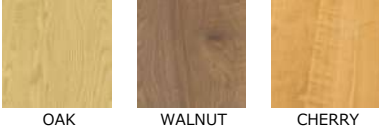
## Dining Chair

### 2292, Dining Chair

SIZE (mm)  
W 525 X D 565 X H 810 SH: 460 AH: - M3/PCS 0.195 /m3

PRICE	Upholstery Grade:			
	A	B	C	L
OAK	\$70.00	\$71.70	\$73.70	\$95.70
WALNUT	\$87.20	\$88.80	\$90.80	\$112.90
CHERRY	\$70.00	\$71.70	\$73.70	\$95.70

WOOD Selection



### 2292, Dining Arm Chair

SIZE (mm)  
W 525 X D 565 X H 810 SH: 460 AH: 655 M3/PCS 0.254 /m3

PRICE	Upholstery Grade:			
	A	B	C	L
OAK	\$86.70	\$88.40	\$90.30	\$112.40
WALNUT	\$112.70	\$114.40	\$116.40	\$138.40
CHERRY	\$86.70	\$88.40	\$90.30	\$112.40

WOOD Selection

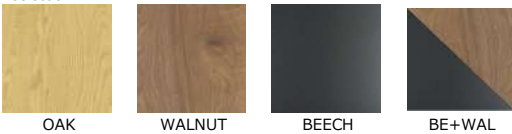


### 2482, Dining S-Arm Chair

SIZE (mm)  
W 525 X D 525 X H 785 SH: 460 AH: - M3/PCS 0.172 /m3

PRICE	Upholstery Grade:			
	A	B	C	L
OAK	\$76.90	\$78.00	\$79.10	\$103.50
WALNUT	\$104.20	\$105.30	\$106.40	\$130.80
BEECH	\$73.90	\$74.90	\$76.10	\$100.50
BEECH/WALNUT	\$86.00	\$87.10	\$88.20	\$112.60

WOOD Selection



### 2483, Dining Chair

SIZE (mm)  
W 445 X D 485 X H 810 SH: 460 AH: - M3/PCS 0.129 /m3

PRICE	Upholstery Grade:			
	A	B	C	L
OAK	\$66.70	\$67.70	\$68.90	\$93.30
WALNUT	\$90.50	\$91.50	\$92.70	\$117.10
BEECH	\$64.60	\$65.60	\$66.80	\$91.20
BEECH/WALNUT	\$71.00	\$72.00	\$73.20	\$97.60

WOOD Selection



## Dining Chair

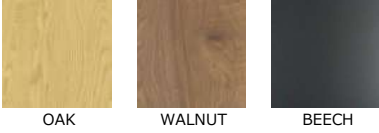
### 2291, Dining Arm Chair

SIZE (mm)

W 595 X D 560 X H 790 SH: 460 AH: 665 M3/PCS 0.285 /m3

PRICE	Upholstery Grade:			
	A	B	C	L
OAK	\$113.30	\$114.70	\$116.40	\$139.30
WALNUT	\$155.60	\$157.00	\$158.60	\$181.60
BEECH	\$107.80	\$109.20	\$110.90	\$133.90

WOOD Selection



### 2484, Dining S-Arm Chair

SIZE (mm)

W 560 X D 500 X H 760 SH: 460 AH: 660 M3/PCS 0.235 /m3

PRICE	Upholstery Grade:			
	A	B	C	L
OAK	\$94.00	\$95.00	\$96.20	\$120.60
WALNUT	\$128.40	\$129.40	\$130.60	\$155.00

WOOD Selection



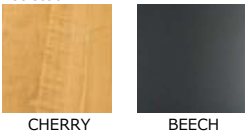
### 2485, Dining S-Arm Chair

SIZE (mm)

W 525 X D 550 X H 790 SH: 460 AH: 680 M3/PCS 0.249 /m3

PRICE	Upholstery Grade:			
	A	B	C	L
CHERRY	\$78.00	\$79.00	\$80.20	\$104.60
BEECH	\$76.00	\$77.00	\$78.20	\$102.60

WOOD Selection



### 2490, Dining Chair

SIZE (mm)

W 450 X D 580 X H 940 SH: 460 AH: - M3/PCS 0.188 /m3

PRICE	Upholstery Grade:			
	A	B	C	L
OAK	\$85.70	\$86.70	\$87.90	\$112.30
WALNUT	\$118.60	\$119.60	\$120.80	\$145.20

WOOD Selection





## Dining Chair

### 2481, Dining Arm Turn Chair

SIZE (mm)  
W 600 X D 590 X H 780 SH: 460 AH: 655 M3/PCS 0.207 /m3

PRICE	Upholstery Grade:			
	A	B	C	L
OAK	\$111.30	\$117.30	\$124.90	-
WALNUT	\$134.00	\$139.90	\$147.50	-
CHERRY	\$111.30	\$117.30	\$124.90	-
BEECH	\$110.90	\$116.80	\$124.40	-

WOOD Selection



### 2486, Dining Arm Chair

SIZE (mm)  
W 540 X D 580 X H 830 SH: 460 AH: 665 M3/PCS 0.311 /m3

PRICE	Upholstery Grade:			
	A	B	C	L
OAK	\$88.70	\$93.10	\$98.90	-
WALNUT	\$102.70	\$107.10	\$112.90	-
CHERRY	\$88.70	\$93.10	\$98.90	-
BEECH	\$89.10	\$93.50	\$99.20	-

WOOD Selection



### 2487, Dining Arm Chair

SIZE (mm)  
W 520 X D 640 X H 815 SH: 460 AH: 655 M3/PCS 0.303 /m3

PRICE	Upholstery Grade:			
	A	B	C	L
OAK	\$97.70	\$102.60	\$108.90	-
WALNUT	\$123.70	\$128.60	\$134.90	-
CHERRY	\$97.70	\$102.60	\$108.90	-
BEECH	\$96.20	\$101.10	\$107.40	-

WOOD Selection

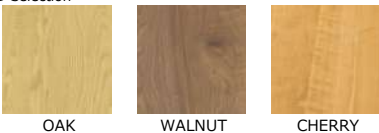


### 2488, Dining Chair

SIZE (mm)  
W 520 X D 525 X H 795 SH: 460 AH: - M3/PCS 0.176 /m3

PRICE	Upholstery Grade:			
	A	B	C	L
OAK	\$78.80	\$80.30	\$82.20	-
WALNUT	\$108.20	\$109.70	\$111.60	-
CHERRY	\$78.80	\$80.30	\$82.20	-

WOOD Selection



## Dining Chair

### 2468, Dining Chair

SIZE (mm)  
W 540 X D 560 X H 760 SH: 460 AH: - M3/PCS 0.270 /m3

PRICE	Upholstery Grade:			
	A	B	C	L
OAK	\$95.70	\$96.80	\$97.90	\$122.30
WALNUT	\$137.60	\$138.60	\$139.80	\$164.20
OAK/WALNUT	\$101.10	\$102.10	\$103.30	\$127.70
BEECH	\$92.80	\$93.80	\$95.00	\$119.40

WOOD Selection

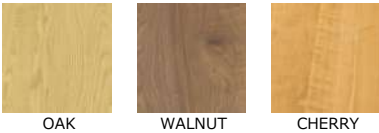


### 2489, Dining Chair

SIZE (mm)  
W 490 X D 560 X H 855 SH: 450 AH: - M3/PCS 0.163 /m3

PRICE	Wooden Seat
	OAK
WALNUT	\$121.50
CHERRY	\$81.80

WOOD Selection



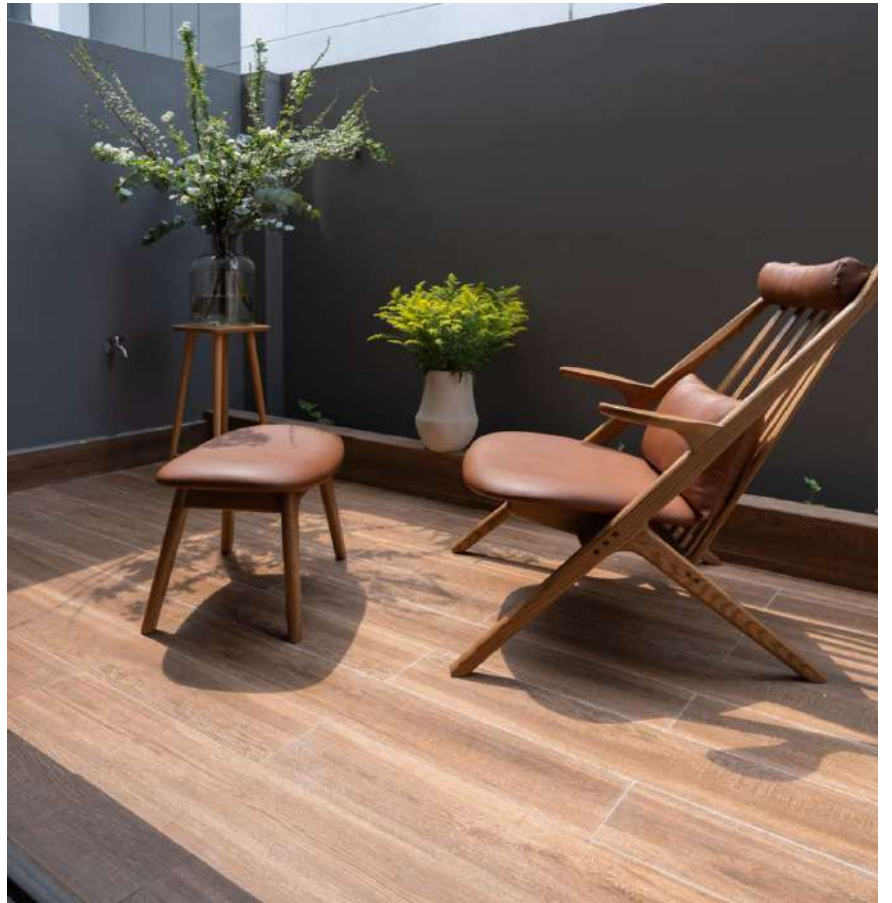
### 2293, Dining Chair

SIZE (mm)  
W 490 X D 545 X H 830 SH: 460 AH: - M3/PCS 0.162 /m3

PRICE	Upholstery Grade:			
	A	B	C	L
OAK	\$62.00	\$63.30	\$64.80	\$88.20
WALNUT	\$76.50	\$77.70	\$79.30	\$102.70
CHERRY	\$62.00	\$63.30	\$64.80	\$88.20
BEECH	\$61.80	\$63.00	\$64.60	\$88.00

WOOD Selection





# Gallia Living

Cerubo World Marketing Collection



# Gallia

## Living series

---

### 1660, Oak Living SOFA 1 seater

---

SIZE (mm)  
W 1050 X D 870 X H 810 SH: 400 AH: 560 M3/PCS 0.790 /m3

Upholstery Grade:  
PRICE A B C  
OAK \$281.40 \$287.40 \$295.00

WOOD Selection



OAK-LOMZ



### 1660, Oak Living SOFA 3 seater

---

SIZE (mm)  
W 2000 X D 870 X H 810 SH: 400 AH: 560 M3/PCS 1.467 /m3

Upholstery Grade:  
PRICE A B C  
OAK \$505.80 \$518.00 \$533.80

WOOD Selection



OAK-LOMZ



### 1757, Oak Living Table

---

SIZE (mm)  
W 1200 X D 600 X H 500 SH: - AH: - M3/PCS 0.077 /m3

PRICE  
OAK \$221.00

WOOD Selection



OAK-LOMZ



### 1756, Oak Personal Chair

---

SIZE (mm)  
W 670 X D 840 X H 895 SH: 380 AH: 580 M3/PCS 0.536 /m3

Upholstery Grade:  
PRICE A B C  
OAK \$127.20 \$129.70 \$132.80

WOOD Selection



OAK-LOMZ



### 1425, Oak Stool

---

SIZE (mm)  
W 530 X D 350 X H 410 SH: 380 AH: - M3/PCS 0.083 /m3

Upholstery Grade:  
PRICE A B C  
OAK \$46.90 \$47.80 \$48.70

WOOD Selection



OAK-LOMZ



# Gallia Dining

Cerubo World Marketing Collection



# Gallia

## Dining series

### 2118, Oak Dining Chair

SIZE (mm)  
W 605 X D 590 X H 900 SH: 450 AH: - M3/PCS 0.251 /m3

Upholstery Grade:  
PRICE A B C L  
OAK \$93.10 \$94.40 \$95.90 \$119.40

WOOD Selection



OAK-LOMZ



### 2118, Oak Dining Arm Chair

SIZE (mm)  
W 635 X D 590 X H 900 SH: 450 AH: 670 M3/PCS 0.357 /m3

Upholstery Grade:  
PRICE A B C L  
OAK \$104.00 \$105.30 \$106.80 \$130.20

WOOD Selection



OAK-LOMZ



### 2448, Red Oak Table Top

SIZE	PRICE	M3/PCS
ZZT-2448-2000X900 T.TOP ONLY	\$255.90	0.120 /m3
ZZT-2448-1800X900 T.TOP ONLY	\$232.90	0.109 /m3
ZZT-2448-1650X850 T.TOP ONLY	\$213.30	0.095 /m3
ZZT-2448-1500X850 T.TOP ONLY	\$183.30	0.087 /m3

WOOD Selection



OAK-LOMZ



### 2480, 4-LEG

SIZE (mm)  
W - X D - X H - SH: - AH: - M3/PCS 0.083 /m3

PRICE  
OAK \$76.80

WOOD Selection



OAK-LOMZ



### 2479, 2-LEG

SIZE (mm)  
W - X D - X H - SH: - AH: - M3/PCS 0.014 /m3

PRICE  
OAK \$129.80

WOOD Selection



OAK-LOMZ



# Upholstery list

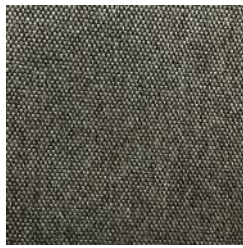
## A grade

---

PA series ( Polyester 100%)



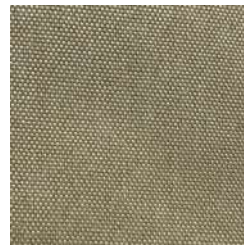
PABK



PACG



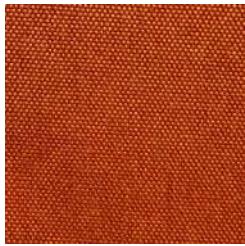
PABR



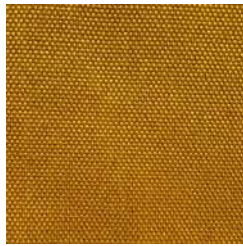
PACA



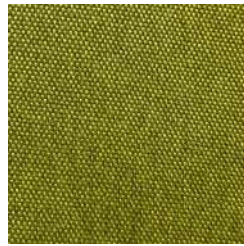
PABL



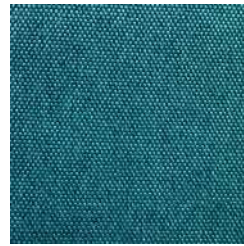
PAOR



PAYE



PAGR



PATA

IF series ( Polyester 100%)



IFBR



IFCA



IFLG



IFGY



IFNV



IFGR



IFUG



IFLB

DO series ( Polyester 100%)



DOBK



DOCG



DOOR

## ***Upholstery list***

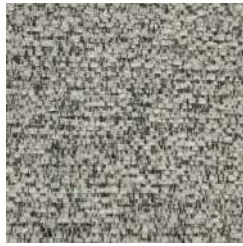
### ***A grade***

---

TM series ( Polyester 100%)



TMGY



TMOW



TMSK



TMGR



TMYE



TMOR

### ***B grade***

---

JD3 series ( Polyester 100%)



JD3BK2



JD3CG2



JD3OW2



JD3BR2

FP series ( PVC )



FPBR



FPBE



FPGR



FPOR

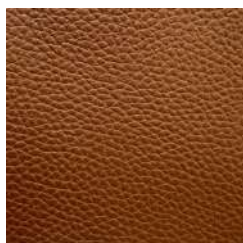


FPGY

TH series ( PVC )



TH89



THBR



THGY



## ***Upholstery list***

### ***C grade***

---

HR series ( Polyester 90% / Cotton 10% )



HRBL



HROR

FW series ( Polyester 54% / Acrylic 46% )



FWCA



FWLB

### ***L grade***

---

Cow Leather



GLBK



#### **Location**

##### **A:FACTORY 1**

ADD: Binh Phuoc A Quater, Binh Chuan Ward, Thuan An City,  
Binh Duong Province. Vietnam

Tel: +84-274-3788374, 3788375

Fax: +84-274-3788376

e-mail: info@cerubo.com

##### **B:FACTORY2**

ADD:Lot Cn13, H1 Street, KIM HUY INDUSTRY PARK, Phu Tan Ward,  
Thu Dau Mot City, Binh Duong Province.

Tel: +84-274-3815500, 3815501, 3815502

Fax: +84-274-3815503